



# AMALTHEA

## RESIDENCES

PARALIMNI - CYPRUS



**AMALTHEA RESIDENCES**



A NEW RESIDENTIAL PROJECT BY

**HOMEMAKE**  
IRAKLEOUS

CRAFTED FOR *Elegance*  
DESIGNED FOR *Living*



Amalthea Residence features 36 thoughtfully crafted apartments, designed with functionality, contemporary living, and everyday comfort in mind.

Each space is created to enhance quality of life and offer residents a welcoming environment to truly feel at home.

AT A GLANCE

2

apartment blocks

9

one-bedroom apartments

24

two-bedroom apartments

3

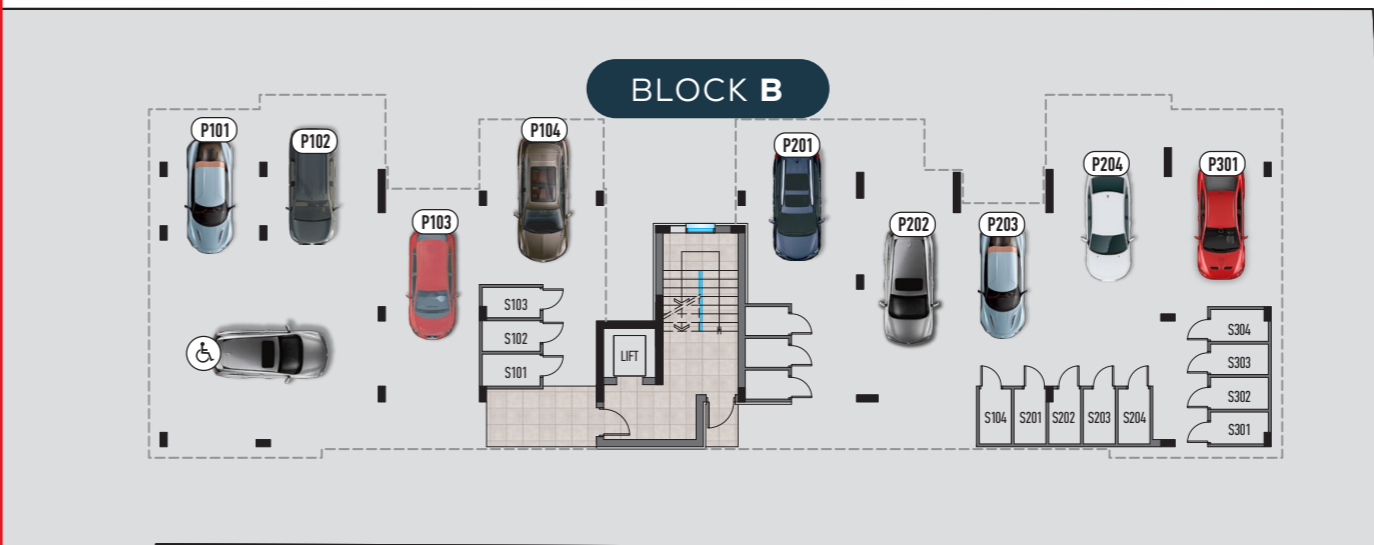
three-bedroom apartments

4

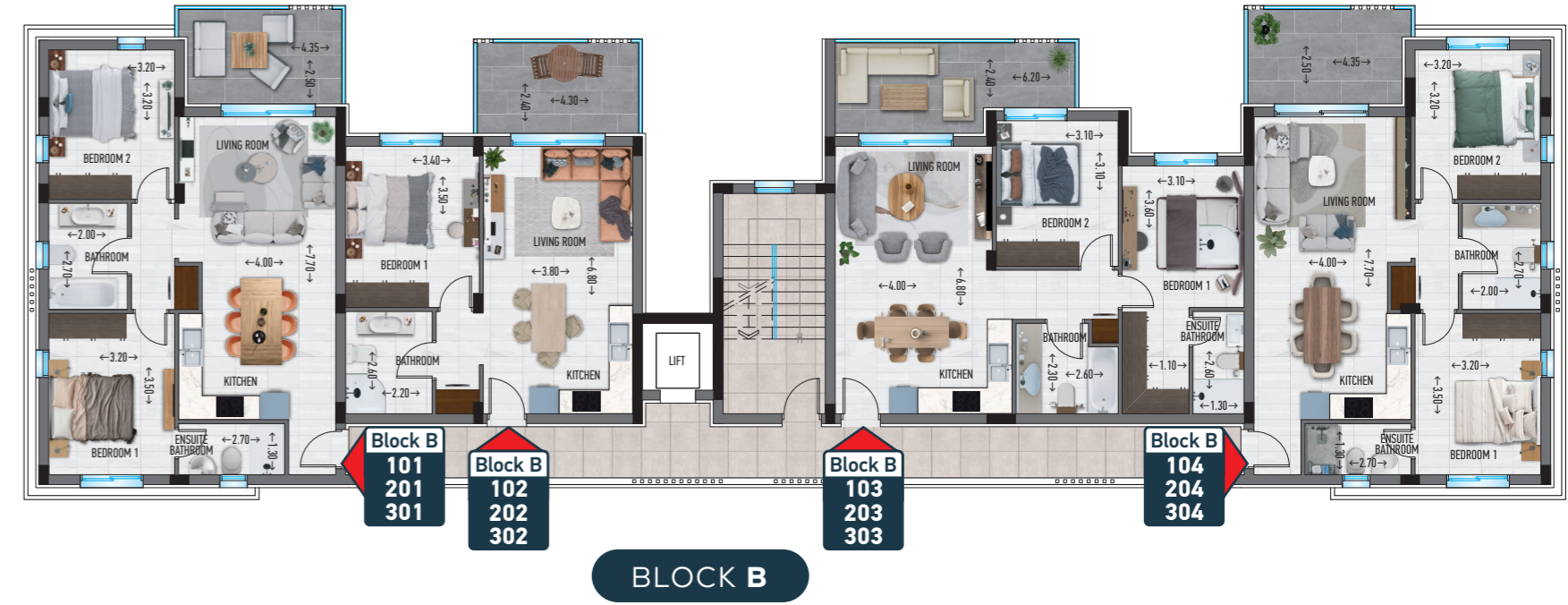
penthouses with private rooftop gardens

LIVING

area from 66m<sup>2</sup> to 121m<sup>2</sup>



FLOORS  
1, 2 & 3



OVERVIEW  
& PROJECT FEATURES

- AMALTHEA Residences consists of two 3-storey blocks housing a total of 36 apartments, including four penthouses with roof garden
- Communal swimming pool
- Spacious open-plan kitchen, living room and dining room
- Each 2&3 bedrooms apartment comes with 2 bathrooms (one ensuite)
- Large covered verandas
- Luxurious construction and finishing materials
- Designated covered parking space and storage room for each apartment
- Located in Paralimni, 4km from the sea
- Desirable residential neighbourhood
- Situated in proximity to private schools, supermarkets and everyday amenities
- Photovoltaic panels
- Class 'A' Energy efficient building
- Provision for e-vehicle charger in the parking area
- Built-in wardrobes
- European sanitary ware
- Water pressure system
- Solar heating system for hot water
- Main entrance with intercom system



A HARMONY OF *Comfort* AND *Style*



APARTMENT DETAILS

BLOCK A

APT. NO	BEDROOMS	BATHROOMS	INTERNAL COVERED AREAS m <sup>2</sup>	COVERED VERANDAS m <sup>2</sup>	ROOF GARDEN (OPTIONAL)	TOTAL AREAS m <sup>2</sup>	STORAGE	PARKING
101	2	2	82,68	12,90	-	95,58	✓	✓
102	3	2	103,28	18,13	-	121,41	✓	✓
103	1	1	56	12,04	-	68,04	✓	✓
104	1	1	56,95	9,72	-	66,67	✓	✓
105	2	2	79,45	13,21	-	92,66	✓	✓
106	2	2	78,55	13,21	-	91,76	✓	✓
107	2	2	78,55	13,21	-	91,76	✓	✓
108	2	2	80,32	9,87	-	90,19	✓	✓
201	2	2	82,68	12,90	-	95,58	✓	✓
202	3	2	103,28	18,13	-	121,41	✓	✓
203	1	1	56	12,04	-	68,04	✓	✓
204	1	1	56,95	9,72	-	66,67	✓	✓
205	2	2	79,45	13,21	-	92,66	✓	✓
206	2	2	78,55	13,21	-	91,76	✓	✓
207	2	2	78,55	13,21	-	91,76	✓	✓
208	2	2	80,32	9,87	-	90,19	✓	✓
301	2	2	82,68	12,90	✓	95,58	✓	✓
302	3	2	103,28	18,13	✓	121,41	✓	✓
303	1	1	56	12,04	-	68,04	✓	✓
304	1	1	56,95	9,72	-	66,67	✓	✓
305	2	2	79,45	13,21	-	92,66	✓	✓
306	2	2	78,55	13,21	-	91,76	✓	✓
307	2	2	78,55	13,21	-	91,76	✓	✓
308	2	2	80,32	9,87	-	90,19	✓	✓

BLOCK B

APT. NO	BEDROOMS	BATHROOMS	INTERNAL COVERED AREAS m <sup>2</sup>	COVERED VERANDAS m <sup>2</sup>	ROOF GARDEN (OPTIONAL)	TOTAL AREAS m <sup>2</sup>	STORAGE	PARKING
101	2	2	80,26	10,31	-	90,57	✓	✓
102	1	1	56	10,32	-	66,32	✓	✓
103	2	2	79,46	13,30	-	92,76	✓	✓
104	2	2	80,32	10,31	-	90,63	✓	✓
201	2	2	80,26	10,31	-	90,57	✓	✓
202	1	1	56	10,32	-	66,32	✓	✓
203	2	2	79,46	13,30	-	92,76	✓	✓
204	2	2	80,32	10,31	-	90,63	✓	✓
301	2	2	80,26	10,31	-	90,57	✓	✓
302	1	1	56	10,32	-	66,32	✓	✓
303	2	2	79,46	13,30	✓	92,76	✓	✓
304	2	2	80,32	10,31	✓	90,63	✓	✓



Prime Location

Ideally situated near golden beaches, essential amenities, and just a short drive from the airport, this development offers the best of both convenience and coastal charm. Live close to what matters and even closer to the sea.





# AMALTHEA

RESIDENCES



## HOMEMAKE

IRAKLEOUS

📍 Adamantiou Korai 72,  
5280 Paralimni, Cyprus

☎ 70001371

✉ info@homemake.com.cy

[www.homemake.com.cy](http://www.homemake.com.cy)



### DISCLAIMER

This brochure is for illustration purposes only. It does not constitute a contract or any part of a contract. All drawings, dimensions, computer generated images and construction specifications are indicative and not legally binding.

